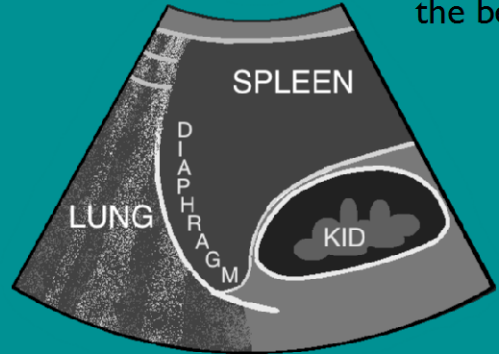
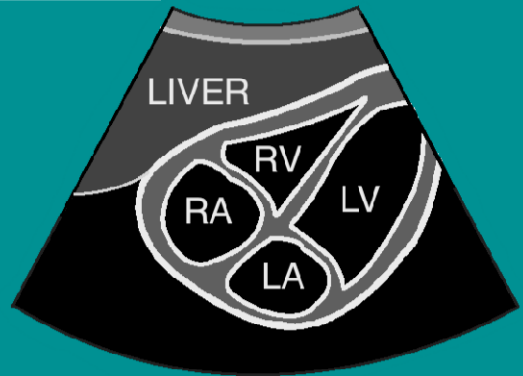


(4) LUQ Depth 15cm.

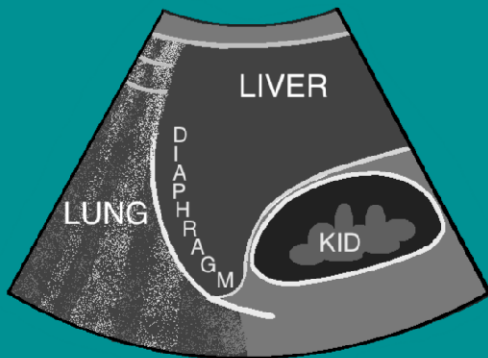
\*Knuckles on the bed



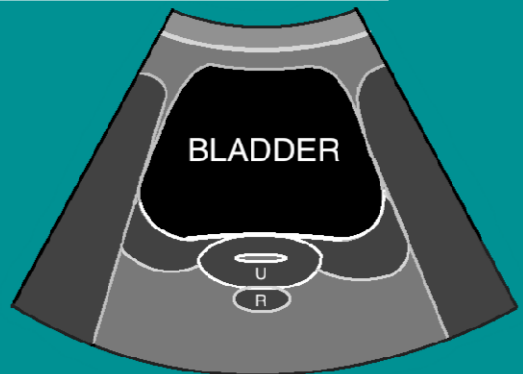
(5) Subcostal Depth 25cm.



(1) RUQ Depth 15cm.

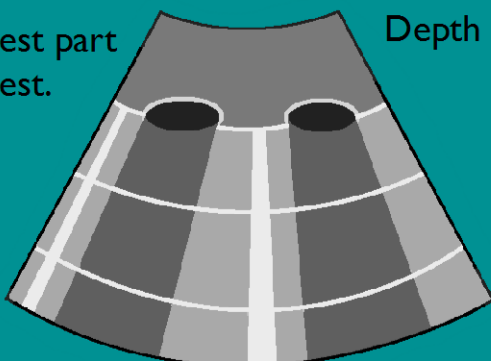


(6) Suprapubic- transverse Depth 20cm.



(2), (3) R & L Anterior Chest

\*Highest part of chest. Depth 5cm.



(6) Suprapubic- longitudinal

Depth 20cm.

