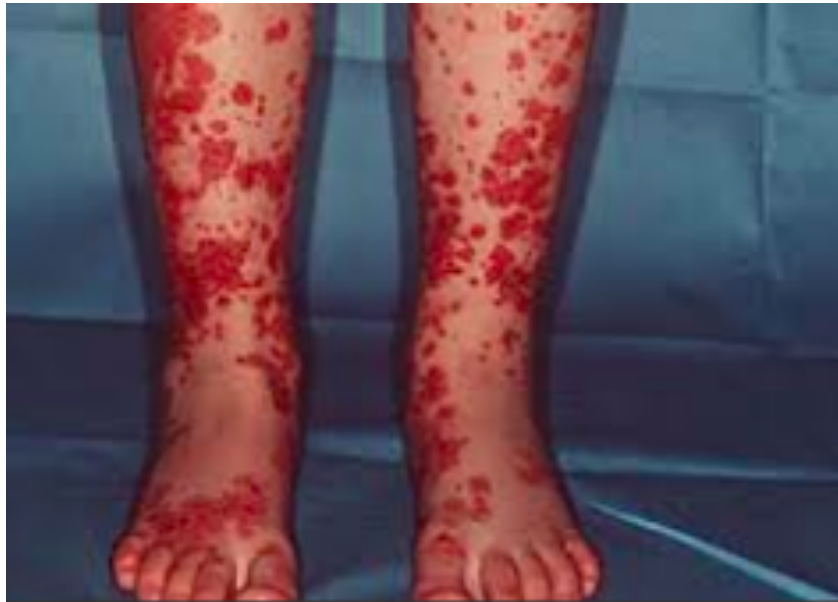


Investigation of the week: May 31

A 4 year old boy is brought into the Emergency Department by his Mum with complaints of abdominal pain, refusing to weight bear and concern about a rash. He has recently been unwell with a respiratory tract infection. His is afebrile on examination.



1. Describe the rash and give a differential diagnosis for the rash (3 points)
2. What is the most likely diagnosis (1 point) and what are the 4 typical features of this condition? (2 point)
3. What is the most important bedside investigation to perform and why? (1 point)
4. List 2 complications of this condition (2 points)